



Feature

Non-cavity corrugated flat film
Protection degree IP67
Sanitary surface roughness $R_a < 0.38 \mu\text{m}$ can be selected

Variety housing optional
Multiple E-connection optional

Application

Food and beverage industry
Medical pharmaceutical industry
Biotechnology
Pigment, spraying
Chemical industry and paper industry

Description

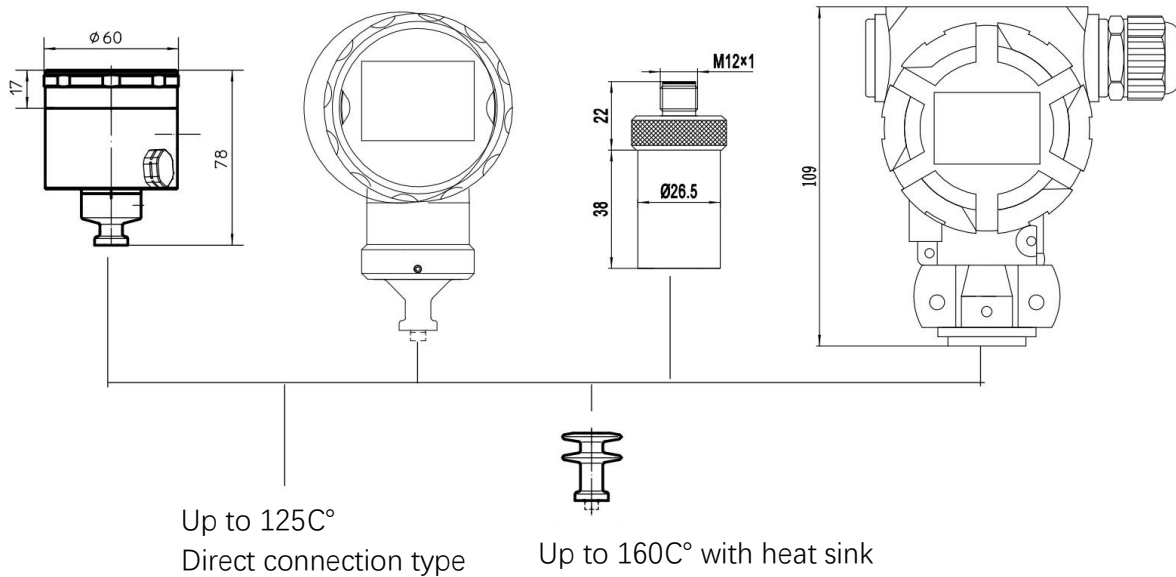
This series is a sanitary special pressure transmitter with diffused silicon pressure core as sensitive element and 316L stainless steel diaphragm isolation. This series of products has the characteristics of stainless steel welded structure, high precision, non-cavity corrugated flat film, wide measuring range and field display. Widely used in food, medicine and other health industries or fluid pressure measurement and control with particles



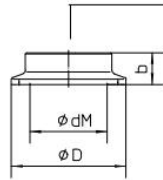
Specification

Product structure	Flush\front diaphragm	Flat diaphragm,Sanitary type
Pressure range	-1~0bar;0~400bar	-1~0bar;0~40bar
Pressure type	Gauge pressure,absolute pressure	
Accuracy	0.5% F.S; 0.25% F.S; 0.1%F.S	
Electrical Performance	2-wire	
Output signal	4 ~ 20 mA	
Power supply	12 ~ 30Vdc	
Overload resistance	<(U-12) /0.02	
E-connection	M12x 1(4-pin),Hirschmann,water-proof connector	
Diaphragm temperature	-20~125C° (direct connection typ);-20~160C° (heat sink type)	
Ambient temperature	-40 ~ 80C°	
Protection degree	IP67	
Process connection	G1/2,G3/4,G1,M20X1.5 etc	

Dimension

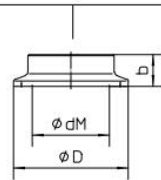


Process connection



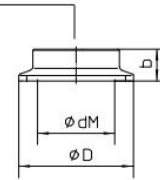
ISO 2852

DN	ZOII	PN	dM	ΦD	b	Code
25	1"	16	22.6	50.5	14	C1
38	1 1/2"	16	34	50.5	12	C2
51	2"	16	46	64	14	C3



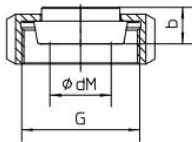
DIN 32676

DN	PN	dM	ΦD	b	Code
25	16	22.6	50.5	14	C4
32	16	30	50.5	14	C5
40	16	34	50.5	12	C6
50	16	46	64	14	C7



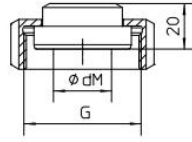
Tri-clamp connection

DN	PN	dM	ΦD	b	Code
3/4"	16	15	25	15	C8
1"	16	22.6	50.5	15	C9
1 1/2"	16	34	50.5	12	C10
2"	16	46	64	14	C11



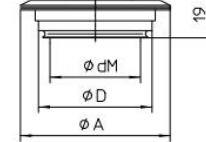
DIN 11851

DN25	PN	dM	b	G	Code
25	40	27	16	Rd. 52*1/6	C12
32	40	36	16	Rd. 58*1/6	C13
40	40	40	16	Rd. 65*1/6	C14
50	25	51	17	Rd. 78*1/6	C15

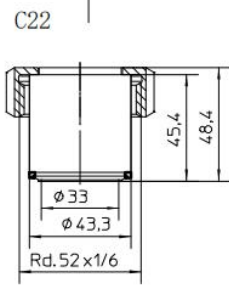


DIN 11864-1

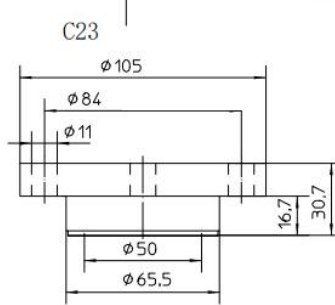
DN25	PN	dM	G	Code
25	40	24	Rd. 52*1/6	C16
32	40	30	Rd. 58*1/6	C17
40	40	34	Rd. 65*1/6	C18
50	25	48	Rd. 78*1/6	C19



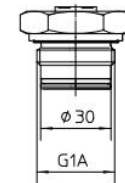
DN	ΦdM	ΦA	ΦD	Code
25 1"	44	66	50	C20
40-125	58	84	68	C21



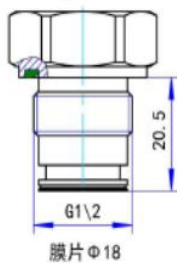
Sanitary type Φ 43.3 probe
DN25/PN40



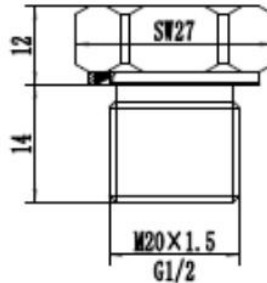
DN50 PN40



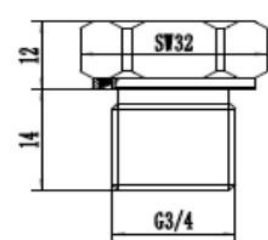
Diffused silicon isolation type



Diffused silicon isolation type






Diffused silicon front type



Diffused silicon front type



E-connection

Hirschmann DIN 175301-803 A				Round connector 4-pin M12 x 1			
		Current	Voltage			Current	Voltage
	U+	1/red	1/red		U+	1/brown	1/brown
	0V		2/black		0V		4/black
	S+	2/black	3/green		S+	3/blue	3/blue
Leading wire, Shielded							
		Current	Voltage			Current	Voltage
	U+	red	red				
	0V		black				
	S+	black	green				

Ordering guide

		PT216	-	X	-	X	-	X	X	-	X	-	X	-	X	-	X	
Product type	Flat film φ 27 shell			AS														
	Flat film type -2088 shell			AH														
	Flat film-axial all-stainless steel shell			AM														
	Flat film type -radial all stainless steel shell			AN														
	Sanitary φ 27 shell			WS														
	Sanitary type -2088 shell			WH														
	Sanitary-axial all-stainless steel shell			WM														
	Sanitary type -radial all stainless steel shell			WN														
	Core preposed φ 27 shell			QS														
	Core front type -2088 shell			QH														
	Pressure type	Gauge pressure																
		Absolute pressure				G												
Pressure unit	bar																	
	MPa					B												
	kPa					M												
Pressure range	Pressure range value x																	
									X									
Process connection	G1/2																	
	G1																	
	G3/4																	
	M20×1.5																	
Output signal	4 ~ 20mA																	
	0 ~ 10VDC(only AS, WS, QS are optional)																	
	0 ~ 5VDC(only AS, WS, QS are optional)																	
E-connection	Hirschmann connector (DIN 175301-803 C)																	
	M12×1 4-pin round connector																	
	water-proof connector leading wire X meters																	
Material	SUS304 (standard)																	
	SUS316L																	
Accuracy	0.5%F.S																	
	0.25% F.S																	
	0.125% F.S																	
Connecting structure	Standard direct connection,temperature resistance range:-20 ~ 125C°																	
	High temperature heat sink type, temperature resistance range:-20 ~ 160C° (QS and QH are not workable)																	

